



CAN/CAN'T



- Yeteneklerimizden bahsederken yapabildiklerimiz için "Can", yapamadıklarımız için "Can't" kullanırız.
- Kendimizden bahsederken "I", kızlardan bahsederken "She" erkeklerden bahsederken "He", hayvanlardan bahsederken "It" öznelerini kullanırız.



- ✓ I can dance. (Ben dans edebilirim)
- ✗ I can't dance. (Ben dans edemem.)
- ✓ She can dance. (Kız dans edebilir.)
- ✗ She can't dance. (Kız dans edemez.)



- ✓ He can play football.
- ✗ He can't play football.



✓ It can climb trees.
✗ It can't climb trees.

● Soru sormak istediğimiz zaman "Can" kelimesini cümlenin başına getirmeliyiz.



* Can you sing a song?

✓ Yes, I can.
Yes, I can sing a song.

✗ No, I can't.
No, I can't sing a song.



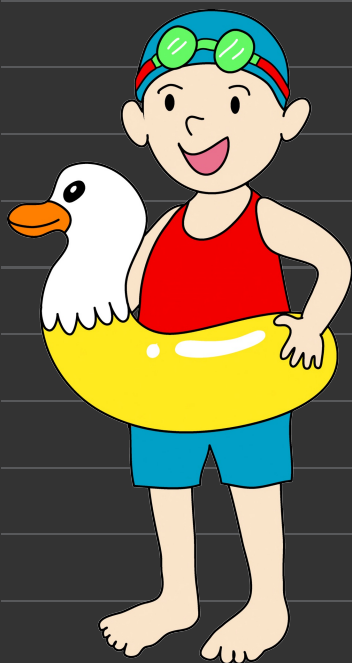
* Can she sing a song?

✓ Yes, she can.

Yes, she can sing a song.

✗ No, she can't.

No, she can't sing a song.



* Can he swim?

✓ Yes, he can.

Yes, he can swim.

✗ No, he can't.

No, he can't swim.



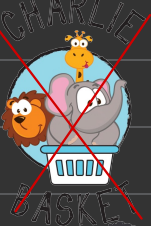
* Can it fly?

✓ Yes, it can.
Yes, it 'can fly.

✗ No, it can't.
No, it 'can't fly.

* Answer the Questions *

1)



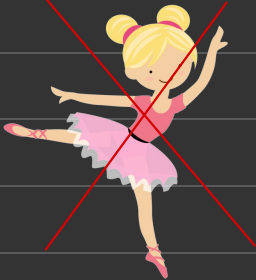
Can the elephant play basketball?
—

2)



Can he play chess?
—

3)



Can she dance?
—

